

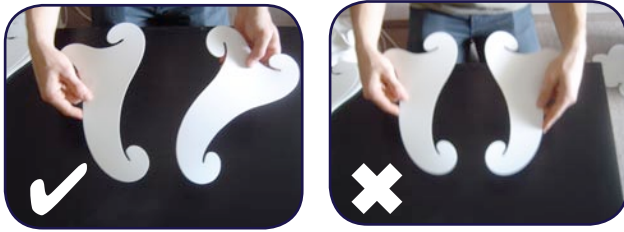
SOL ASSEMBLY GUIDE



**ELECTRIC
FIREFLY**
DESIGN & CREATION

ALSO ON VIDEO AT: www.electricfirefly.com.au

1.



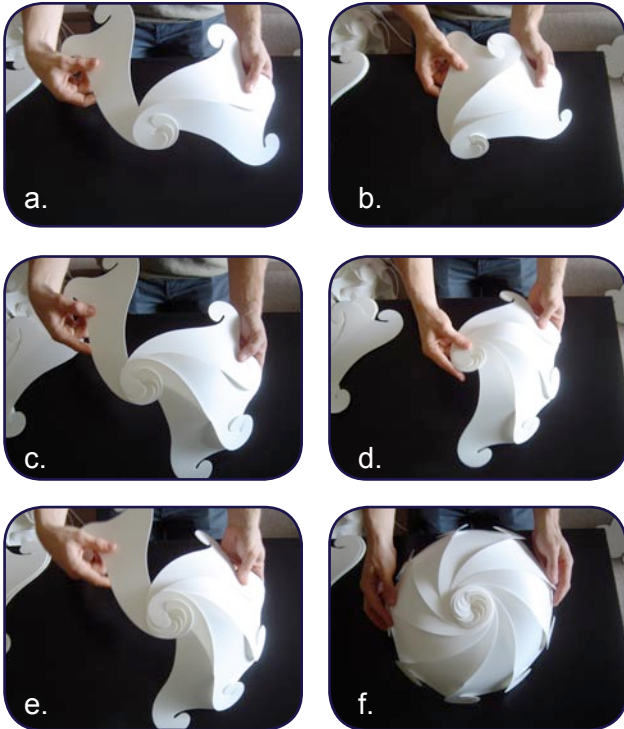
Each piece faces the same way up.

2. Hook the 2 long corners together as shown



Then the 2 short hooks. The pieces will cross each other in the middle

3. Add each piece the same way making sure they're properly joined before doing the next one

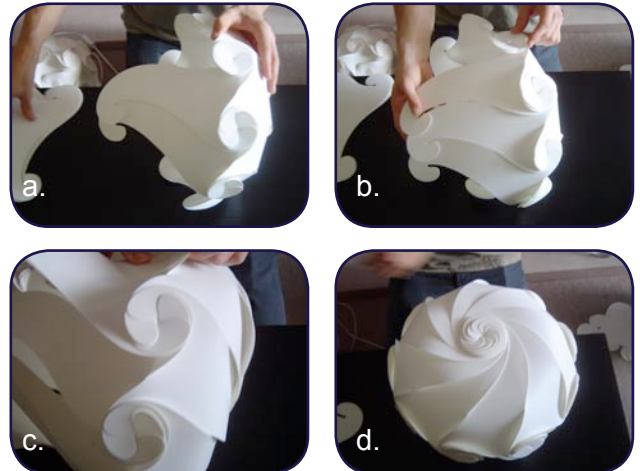


Join the 9th piece onto the first and this side is complete.

4. The other pieces join onto the first half the same way, starting at the other end

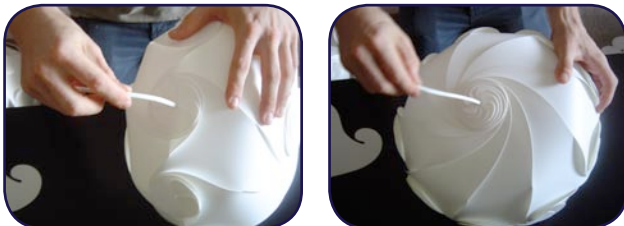


5. Join all of the pieces like this



Then hook them together in the middle

6.



The lamp can be hung from any of the spirals.

When you fit the cable into your shade, make sure it fits into the centre of the spiral.

If you are using the table lamp fitting, make sure the frame is fitted.

If you have any questions at all, please email simon@electricfirefly.com.au